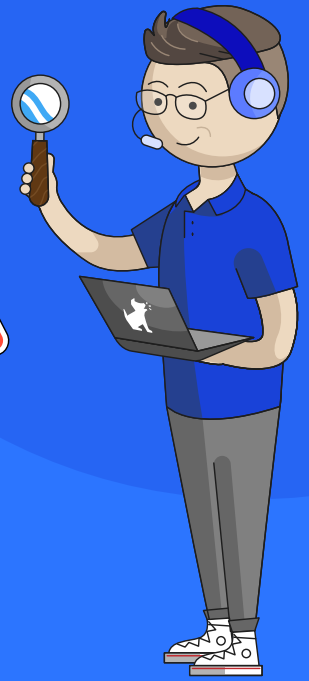
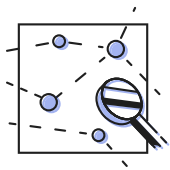




Monitoring Microsoft 365



Our award-winning monitoring service allows you to detect potentially harmful or inappropriate content students may send, receive, or share through their school-issued Microsoft 365 accounts. Get insights into student wellness and alerts to risks like cyberbullying, suicidal ideation, online predators, threats of violence, and more.



Advanced AI

Our machine-learning technology analyzes text, emojis, images, and videos.



In-Depth Reporting

Use monitoring reports to gain insight into the digital wellbeing of your student body.



Customizable Alerts

Control which issues trigger alerts and who is tasked with managing them.

Help protect your students while they use:

- Outlook
- OneDrive
- MS Word

For even better protection, check out:

- [Parent Portal](#) ↗
- [Bark for Schools+](#) ↗
- [Chrome web filtering](#) ↗
- [DNS web filtering](#) ↗
- [G Suite monitoring](#) ↗